

Tourist Drives on the Granite Belt



South

**Guests Favourite – 80km
 Via Girraween National Park**

- Pyramid Road Wines
- Bent Road Winery
- Jamworks Gourmet Foods
- Heavenly Chocolate

Oracles Way– 64km to Tenterfield

Via Amosfield Road and Mount Lindsay Road

- ◆ Liston – Aloomba Lavender Farm
- ◆ Bald Rock National Park
- ◆ Boonoo Boonoo National Park
- ◆ Thunderbolt's Hide-Out
- ◆ World War II Tank Traps

Highland Drive– 31km

Via Storm King Dam, Eukey & Ballandean

- ◆ Storm King Dam
- ◆ Symphony Hill Wines
- ◆ Twisted Gum Winery
- ◆ Hidden Creek Winery
- ◆ Just Red Wines
- ◆ The Ginyard
- ◆ Ballandean Pub
- ◆ Ballandean Estate
- ◆ Bent Road Winery & Distillery

North

Armistice Way – 34km

Via Thulimbah, Pozieres and Amiens

- ◆ Suttons Juice Factory & Café
- ◆ Stanthorpe Cheese
- ◆ Donnelly's Castle
- ◆ Passchendaele State Forest – lookout
- ◆ Robert Channon Wines
- ◆ Ravenscroft Vineyard
- ◆ Granite Belt Brewery

**Shearer's Way – Texas Road
 – 90km to Bruxner Highway**

Via Texas Road, Glenlyon Dam Road and Mingoola Road to Bruxner Highway

- ◆ Casley Mount Hutton Winery
- ◆ Glenlyon Dam
- ◆ Sundown National Park

Bookings and Enquiries

07 4681 3367 | stay@diamondvalecottages.com.au | 26 Diamondvale Road Stanthorpe, Queensland
 Tourist Drives on the Granite Belt – June 2024



Tourist Drives on the Granite Belt



Armistice Way

74km round trip

The Granite Belt was part of the soldier settlement schemes for the returning heroes of World War 1 and it was considered the perfect place for small farms, capable of supporting one man and his family. The veterans named their farms, and the roads linking them, after battles in which they had fought. The route is a memorial drive established to link these returned soldier settlements.

Suggested Itinerary

- Just south off Amiens Road is Ravens Croft Wines a boutique winery . Open Friday to Sunday 10:30am-4:30pm
- Enjoy the scenery as you follow Amiens Road. Those after outdoor adventuring can explore Passchendaele State Forest Lookout, whilst fossickers should head to Swipers Gully.
- You can discover our famous granite boulders at Donnelly's Castle. It is only a 200m walk to the top providing breathtaking views over the valley.
- Back up to Amiens Road, to stop for cheese tasting at Stanthorpe Cheese. Open daily 9:30am-4pm. The Jersey Girl's Café is also open for lunch, coffee, and cakes daily.
- Vincenzos at the Big Apple is open daily until 3pm weekdays & 4pm weekends and has all the delicious local produce on offer to dine in or bring back to your cottage to enjoy.
- Back down the highway a must stop is Suttons Juice Factory. Enjoy their apple juices, CWA award winning apple pie and so much more. Open daily 9:30am-4:30pm.
- Granite Belt Maze & Mini Golf is nearby and great to burn off some energy. Open 5 days 9am – 5pm (closed Tuesday & Wednesday). Open daily during QLD school holidays.
- A must stop is the Granite Belt Christmas Farm with rich hot chocolate, baked goodies, and a gorgeous selection of Christmas goodies and farm animals including reindeers to pat and feed. Open daily.
- Lucky last stop, Kent Saddlery has a gallery reminiscent of an old saddlery store with leather gear and unique beautiful gifts. There is also a live animal feature for the kids. Open Monday to Friday 8am-5pm, Saturday 8am-12pm.

Bookings and Enquiries

07 4681 3367 | stay@diamondvalecottages.com.au | 26 Diamondvale Road Stanthorpe, Queensland
 Tourist Drives on the Granite Belt – June 2024



Tourist Drives on the Granite Belt

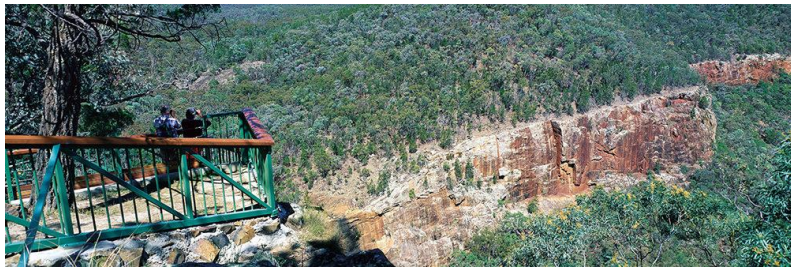
Shearers Way

235 klm round trip



Via Texas Road, Glenlyon Dam Road and Mingoola Road to Bruxner Highway

- Casley Mount Hutton Winery
 - Glenlyon Dam
 - Sundown National Park
- First stop is Robert Channon Wines, the original home of Verdehlo with superb views. Cellar Door Open Monday, Tuesday & Friday 11am – 4pm, Saturday & Sunday 10am - 5pm.
 - Head west via Texas Road, Glenlyon Dam Road and Mingoola Road to the Bruxner Highway and watch the country's startling transformation.
 - Your first stop, 10 minutes from Stanthorpe, should be Casley Mt Hutton Winery, offering wine tasting with owners Grant and Sonya. Open daily 9:30am-4:30pm
 - Further afield, 90kms from Stanthorpe, is Glenlyon Dam. It is ideal for wildlife viewing and many water sports such as skiing, sailing and fishing. Fish species in the dam include Golden Perch, Murray Cod, Silver Perch, Jew and Spangled Perch. Boat hire is available at the Glenlyon Dam Tourist Park located at the water's edge.
 - On the other side of Shearer's Way is the great untamed Sundown National Park which offers excellent four wheel driving from sedate tracks to those that will test even the most experienced driver. You can explore the impressive Red Rock Falls, Mt Lofty, Red Rock Gorge and the steep gorges of Carpenter Gully. The Severn River and its tributaries, and remains of pastoral and mining heritage can be discovered, and more than 150 bird species have been recorded, making it the perfect location for bird-watching enthusiasts.



Bookings and Enquiries

07 4681 3367 | stay@diamondvalecottages.com.au | 26 Diamondvale Road Stanthorpe, Queensland

Tourist Drives on the Granite Belt – June 2024



Tourist Drives on the Granite Belt

Oracles Way

This drive is 203 klm round trip and covers the best of nature, romance, waterfalls, outlaws, war, and history all in one day.

Suggested Itinerary

- Heading out on Amosfield Road, you will cross the border into NSW. On the corner, when you turn left into Liston Road, was the original location where the Diamondvale Homestead was built in 1907.
- Aloomba Lavender Farm on Mt Lindesay Road Liston is the perfect place to pick up a beautiful gift, enjoy a Devonshire tea with lavender scones, lavender is in bloom throughout Spring. Open 10am – 4pm Thursday to Monday.
- Now head south down Mt Lindesay Road, some sections will be gravel so take care. If you are on the hunt for waterfalls, follow the signs to Undercliffe Falls, where the falls descend 150m over a 30m wide rock face and into a deep pool ideal for swimming.
- As you continue south, turn right into Bald Rock National Park. Discover the largest exposed granite rock formation in the southern hemisphere and the fourth largest monolith in Australia. Take the hike to the top and be rewarded with sweeping views of the region.
- Next on your left is Boonoo Boonoo National Park, drive to the falls carpark and take the short stroll past the rock pools where you can swim, then to the falls lookout and find out why this spot is made famous by an Australian Poet!
- On the road heading towards Tenterfield, keep an eye out for the sign for 'Thunderbolt's Hide-Out' from the notorious bush-ranger Captain Thunderbolt. There is a path to the hideout about 300m from the parking area.
- Also in the area is WWII history where the Brisbane fortification line was established as a second line of defence in case of a northern attack. Remnants of the cement wall and upright posts known as tank traps still exist and can be spotted along the road by the various signposts.
- Driving into the beautiful little town of Tenterfield, treat yourself to a wander along Rouse Street and enjoy any of the fabulous cafes (The Corner Life & Style Store is great for coffee, lunch and shopping!), pubs (The Commercial Boutique Hotel is a 1940's charmer) and many more.
- Bad Manners on Manners Street is the go-to for delicious gluten free donuts, brekky burgers, acai bowls and wonderful coffee in their outdoor space with play areas for the kids, animals & firepits too.
- If you are up for a spot of retail therapy, check out Margot Edwina Rees Antiques, My Notes from Gallery & Studio, Make It Tenterfield, the Artists Collective Studio & Gallery is also well worth a look. Ruben & Flax Homewares has a great mix of rustic, country, French and natural and smells divine! Loads of classic country outfitters too!

Check out more things to see and do in Tenterfield <https://www.visittenterfield.com.au/things-to-do>



Bookings and Enquiries

07 4681 3367 | stay@diamondvalecottages.com.au | 26 Diamondvale Road Stanthorpe, Queensland

Tourist Drives on the Granite Belt – June 2024



Tourist Drives on the Granite Belt

Oracles Way

77km round trip

- Head down Sugarloaf Road and veer onto Eukey Road for a wonderfully scenic drive. First stop is Symphony Hill Wines. A 5-star rated winery with varieties served on Qantas Business Class flights, the award list grows every year & something for every taste bud. Open every day 10am to 4pm.
- Next stop are two neighbouring wineries. Twisted Gum Winery, a small boutique dry grown vineyard, open on weekends only 10am-4pm.
- Further down the road, is Just Red Wines. As the name suggests, they just make reds. Great everyday affordable drinking reds, and an award winning Tannat. Open every day from 10am-5pm.
- Bent Road Winery & Distillery is open Friday to Sunday for a wonderful cellar door experience, call in to learn about their three brands, showcasing distinct flavours & pushing boundaries. Bookings essential.
- A short scenic drive up Bents Road, you will find Ballandean Estate Wines. The pioneer winery of grape growing in the region. Open every day from 9am-5pm. The wine lounge serves their signature platters daily in the barrel room and is a wonderful experience.
- Diagonally across the road is Golden Grove Estate, another famous Italian heritage winery, that wins many awards and has something for everyone. Open every day 9am-4pm.
- Tobin Wines is for those looking to take wine appreciation to a whole new level. A couple of hours for tastings and conversations is advisable. Open every day from 10am-5pm.
- Ballandean Pub is a great option for a delicious lunch, playground for the kids or check out Rosa Italian Food Truck at Dear Vincent winery behind the pub.
- Then back up the highway to Jamworks Cafe & Larder for lunch, dessert, ice cream and coffee. Lots of award winning jams & gourmet condiments made from local produce to take home. Open Wednesday to Friday 10am-4pm, weekends 9am – 4pm. Open 7 days during school holidays 10am-4pm. In the Jamworks precinct is also Bluebird Living gift shop and Ladybird Gardener to browse.



Bookings and Enquiries

07 4681 3367 | stay@diamondvalecottages.com.au | 26 Diamondvale Road Stanthorpe, Queensland

Tourist Drives on the Granite Belt – June 2024

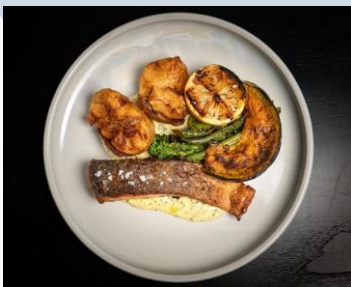


Tourist Drives on the Granite Belt

Guests Favourite Day Out

80km round trip

- Girraween National Park is a popular spot in the region, and you can spend hours there to unwind and soak up the majestic power of the giant granite boulders. Of course, a day out would not be complete without a sweet treat and a sampling of local wines.
- Start the day with a hearty breakfast in your cottage or at Zest Bakery in the main street. Open Tuesday to Saturday.
- Drive to Girraween National Park and either hike 'The Pyramid', 'Castle Rock' or 'The Junction', 2-4hrs return hike.
- Leaving Girraween, stop by Heavenly Chocolate for a couple handmade chocolate treats. Open daily Friday to Monday 10am-4pm, daily during school holidays 10am-4pm.
- Then pop into Pyramid Road Wines to taste their latest vintage & see wine making in progress. Open daily 10am-4:30pm
- Balancing Heart Winery has wood fired pizzas and sharing boards with views to sit back & relax with one of their matching wines. Stroll around the vineyard and take a selfie at the balancing heart rock. Open daily from 10am, weekends open for dinner also.
- Ballandean Pub is another option for lunch, situated on the highway in Ballandean.
- Then back up the highway to Jamworks Café & Larder for lunch, dessert, ice cream and coffee. Lots of award winning jams & gourmet condiments made from local produce to take home. Open Wednesday to Friday 10am-4pm, weekends 9am – 4pm. Open 7 days during school holidays 10am-4pm.
- And finally, home to stretch and put those feet up, enjoy a glass of wine whilst watching the kangaroos graze and the birds sing to the sun setting.



Bookings and Enquiries

07 4681 3367 | stay@diamondvalecottages.com.au | 26 Diamondvale Road Stanthorpe, Queensland

Tourist Drives on the Granite Belt – June 2024

